

# 永磁直流行星齿轮电机 (内齿圈材质: 金属)

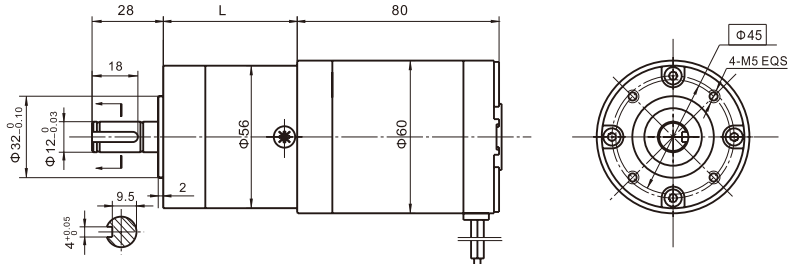
## PM DC Planetary Gear Motor (Ring Gear Material: Metal)

56JX200K/60ZY75

Φ56 标准型减速器, 允许转矩范围: 2N.m~20N.m

56mm OD Standard Gearbox,  
Permissible Load Range: 2N.m~20N.m

### ● 外形和安装尺寸 Dimensions



### ● 电动机主要技术参数 Motor Technical Data

电机型号 TYPE	额定电压 Rated voltage VDC	空载转速 No-load speed r/min	空载电流 No-load current A	额定转速 Rated speed r/min	额定转矩 Rated torque mN.m	输出功率 Output power W	额定电流 Rated current A	堵转力矩 Stall torque mN.m	堵转电流 Stall current A
60ZY75-2420	24	2000	0.3	1600	50	8	0.8	215	2.1
60ZY75-2430	24	3000	0.4	2400	70	17	1.2	296	5.0
60ZY75-2440	24	4000	0.5	3200	90	30	2.2	404	8.5

### ● 齿轮减速电机主要技术参数 Gear Motor Technical Data

配置60ZY75-2430直流电机 (60ZY75-2430 DC Motor)

减速比	Reduction ratio	3.6	4.25	7.5	13	15	18	27	32	47	55	65	76	115	168	198	234	276	326	
减速级数	Number of gear trains	1	1	1	2	2	2	2	2	3	3	3	3	3	4	4	4	4	4	
减速器长度(L)	Length(L)	mm	41	41	41	53	53	53	53	64	64	64	64	64	76	76	76	76	76	
空载转速	No-load speed	r/min	833	706	400	230	200	167	111	94	64	54	46	39	26	18	15	13	11	9
额定转速	Rated speed	r/min	667	565	320	185	160	133	89	75	51	44	37	32	20	14	12	10	9	7.5
额定转矩	Rated torque	N.m	0.22	0.26	0.47	0.73	0.85	1.0	1.5	1.8	2.4	2.8	3.3	3.8	5.8	7.7	9.1	10.8	12.7	15
最大瞬间允许负载 Max. permissible load in a short time	N.m	6	6	6	25	25	25	25	25	50	50	50	50	50	60	60	60	60	60	60

配置60ZY75-2440直流电机 (60ZY75-2440 DC Motor)

减速比	Reduction ratio	3.6	4.25	7.5	13	15	18	27	32	47	55	65	76	115	168	198	234	276	326	
减速级数	Number of gear trains	1	1	1	2	2	2	2	2	3	3	3	3	3	4	4	4	4	4	
减速器长度(L)	Length(L)	mm	41	41	41	53	53	53	53	64	64	64	64	64	76	76	76	76	76	
空载转速	No-load speed	r/min	1111	941	533	308	267	222	148	125	85	73	62	53	26	24	20	17	15	12
额定转速	Rated speed	r/min	888	752	426	246	213	177	118	100	68	58	49	42	27	19	16	13	11	9.5
额定转矩	Rated torque	N.m	0.29	0.34	0.6	0.94	1.1	1.3	1.9	2.3	3.0	3.6	4.2	4.9	7.5	10	11.7	13.8	16.3	19.3
最大瞬间允许负载 Max. permissible load in a short time	N.m	6	6	6	25	25	25	25	25	50	50	50	50	50	60	60	60	60	60	60

### ● 电动机特性图 Motor Characteristic Figure

