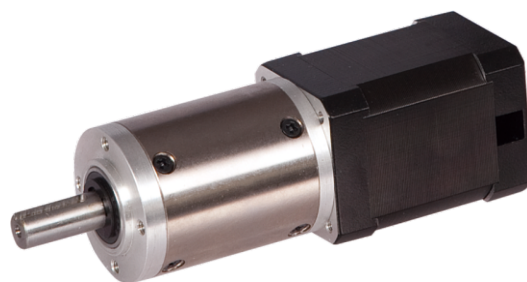


无刷直流行星齿轮减速电机(内齿圈材质: 金属)

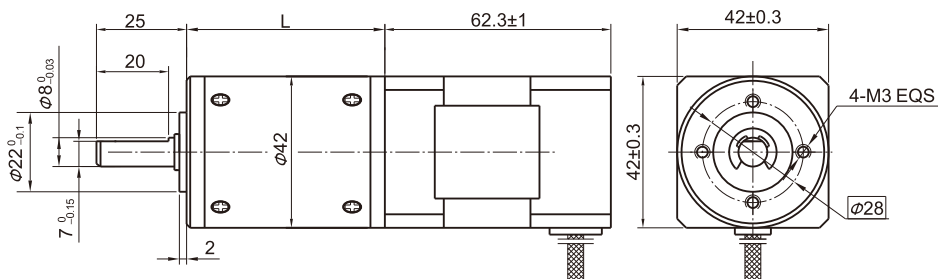
BLDC Planetary Gear Motor (Ring Gear Material: Metal)

42JXGT200K/42BL60

Φ42 行星减速器, 允许转矩范围: 2N.m~20N.m
42mm OD Planetary Gearbox,
Permissible Load Range: 2N.m~20N.m



● 外形和安装尺寸 Dimensions



● 无刷电动机主要技术参数 Brushless Motor Technical Data

电机型号 TYPE	极数 Number of poles	相数 Number of phase	额定电压 Rated voltage VDC	空载转速 No-load speed r/min	额定转速 Rated speed r/min	额定转矩 Rated torque mN.m	额定功率 Rated power W	峰值扭矩 Peak torque mN.m	峰值电流 Peak current A	电阻 Line to line resistance ohms	电感 Line to line inductance mH
42BLS60-2440	10	3	24	4000	3000	160	50	650	11.8	1.1	0.96

● 无刷行星齿轮减速电机主要技术参数 Brushless Gear Motor Technical Data

配置42BLS60-2440无刷直流电机 (42BLS60-2440 BLDC Motor)

减速比	Reduction ratio	17	22	65	83	106	247
减速级数	Number of gear trains	2	2	3	3	3	4
减速器长度(L)	Length(L)	mm	48.0	48.0	58.3	58.3	68.6
空载转速	No-load speed	r/min	235	182	62	48	38
额定转速	Rated speed	r/min	176	136	46	36	28
额定转矩	Rated torque	N.m	2.2	2.9	7.6	9.7	12
最大瞬间允许负载	Max. permissible load in a short time	N.m	25	25	50	50	60

● 接线方式 Wire Diagram

U	V	W	Vcc	Ha	Hb	Hc	GND
黄 Yellow	红 Red	黑 Black	红 Red	蓝 Blue	绿 Green	白 White	黑 Black
20AWG UL1430			26AWG UL1430				