

无刷直行星齿轮减速电机(内齿圈材质:金属)

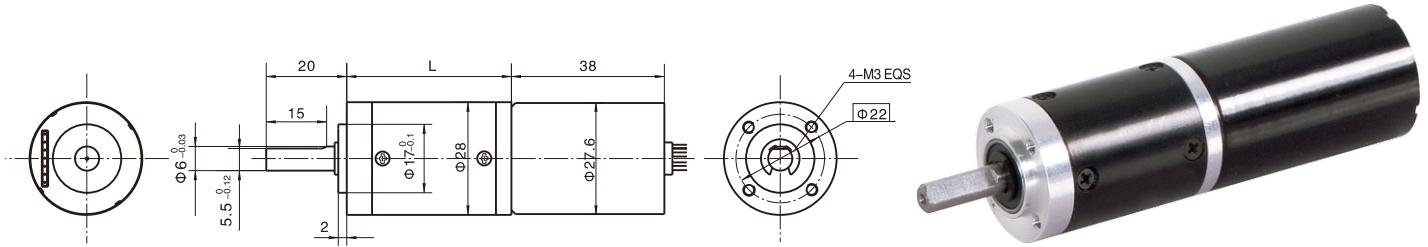
BLDC Planetary Gear Motor (Ring Gear Material: Metal)

**Φ28 行星减速器, 允许转矩范围: 0.3N.m~3N.m**

**28JXB30K/28ZWNP38** 28mm OD Planetary Gearbox,  
Permissible Load Range: 0.3N.m~3N.m

无刷直流电动机, 3相4极, 外置驱动器 3 phase 4 poles brushless DC motor, with external driver

● 外形和安装尺寸 Dimensions



● 无刷电动机主要技术参数 Brushless Motor Technical Data

电机型号 TYPE	极数 Number of poles	相数 Number of phase	额定电压 Rated voltage VDC	空载转速 No-load speed r/min	空载电流 No-load current mA	额定转矩 Rated torque mN.m	额定转速 Rated speed r/min	额定电流 Rated current mA	额定功率 Rated power W
28ZWNP38-2431	4	3	24	3100	180	6.9	2600	250	1.87

使用电压范围 (Voltage Range) : 10~24.5VDC

● 无刷行星齿轮减速电机主要技术参数 Brushless Gear Motor Technical Data

配置28ZWNP38-2431无刷直流电机 (28ZWNP38-2431 BLDC Motor)

减速比 Reduction ratio	3.7	5.2	14	19	27	51	71	100	139	189	264	369	516	720
减速级数 Number of gear trains	1	1	2	2	2	3	3	3	3	4	4	4	4	4
减速器长度(L) Length(L) mm	31.0	31.0	40.1	40.1	40.1	49.0	49.0	49.0	49.0	57.9	57.9	57.9	57.9	57.9
空载转速 No-load speed r/min	836	598	221	163	115	61	44	31	22	16	12	8.4	6.0	4.3
额定转速 Rated speed r/min	701	502	186	137	96	51	37	26	19	14	9.8	7.0	5.0	3.6
额定转矩 Rated torque N.m	0.023	0.032	0.078	0.11	0.15	0.26	0.36	0.50	0.70	0.85	1.2	1.7	2.3	3
最大瞬间允许负载 Max. permissible load in a short time N.m	1.0	1.0	3.5	3.5	3.5	7.5	7.5	7.5	7.5	9	9	9	9	9

● 接线方式 Wire Diagram

VCC接电源正极, GND接负极, 正负极不能接反。  
FR正反转信号线, 悬空或接5V时电机转向CCW, 接GND转向CW。  
FG转速信号线。PWM调速信号输入, 接+5V时电机全速, 接GND停止。  
BRK制动信号输入, 接GND时制动。

Vcc connects positive wire, GND connects negative wire.

FR is signal wire for differentiating CCW and CW. Motor rotation is CCW when FR is Disconnected or connected with 5V. Motor rotation is CW when FR is connected with GND.

FG is wire for speed signal. PWM input speed control signal, connect +5V for motor full-speed working, while connect GND for stopping. BRK is braking signal input, connect GND for braking.

控制线路接线图 Driver Circuit Wiring Diagram

