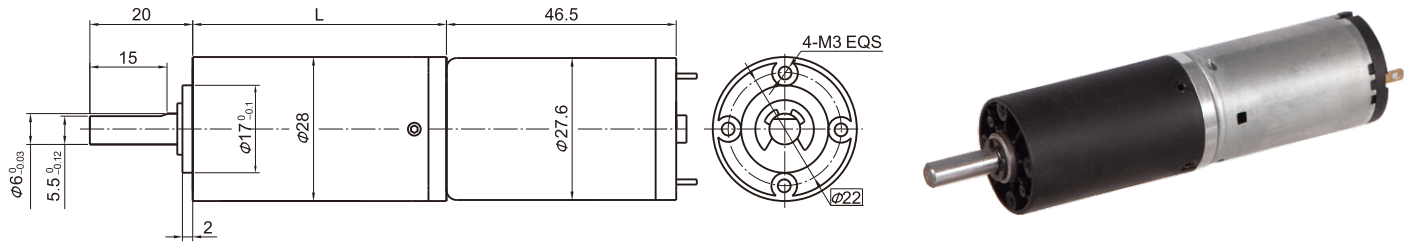


永磁直行星齿轮电机 (内齿圈材质: 塑料)
PM DC Planetary Gear Motor (Ring Gear Material: Plastic)

28JXL30K/28ZY47 $\Phi 28$ 行星减速器, 允许转矩范围: 3.0N.m
28mm OD Planetary Gearbox,
Permissible Load Range: 3.0N.m

高强度塑胶材料制作的内齿圈 Inner ring made of high-strength plastic material

● 外形和安装尺寸 Dimensions



● 电动机主要技术参数 Motor Technical Data

电机型号 TYPE	额定电压 Rated voltage VDC	空载转速 No-load speed r/min	空载电流 No-load current mA	额定转速 Rated speed r/min	额定转矩 Rated torque mN.m	输出功率 Output power W	额定电流 Rated current mA	堵转转矩 Stall torque mN.m	堵转电流 Stall current A
28ZY47-2450	24	5000	80	3800	7	2.8	230	28	0.7
28ZY47-2467	24	6700	100	5100	15	8.0	460	68	1.8

● 齿轮减速电机主要技术参数 Gear Motor Technical Data

配置28ZY47-2450直流电机 (28ZY47-2450 DC Motor)

减速比 Reduction ratio	51	71	100	139
减速级数 Number of gear trains	3	3	3	3
减速器长度(L) Length(L) mm	49.0	49.0	49.0	49.0
空载转速 No-load speed r/min	98	70	50	36
额定转速 Rated speed r/min	75	54	38	27
额定转矩 Rated torque N.m	0.24	0.34	0.48	0.66
最大瞬间允许负载 Max. permissible load in a short time N.m	7.5	7.5	7.5	7.5

配置28ZY47-2467直流电机 (28ZY47-2467 DC Motor)

减速比 Reduction ratio	51	71	100	139
减速级数 Number of gear trains	3	3	3	3
减速器长度(L) Length(L) mm	49.0	49.0	49.0	49.0
空载转速 No-load speed r/min	131	94	67	48
额定转速 Rated speed r/min	100	72	51	37
额定转矩 Rated torque N.m	0.52	0.72	1.0	1.4
最大瞬间允许负载 Max. permissible load in a short time N.m	7.5	7.5	7.5	7.5

● 电动机特性图 Motor Characteristic Figure

