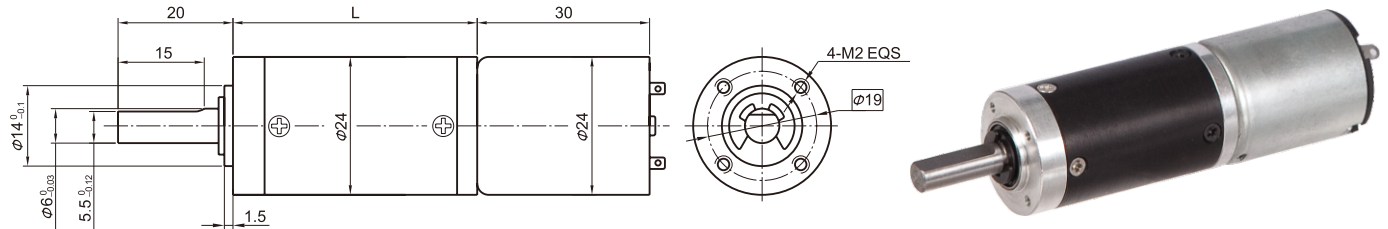


永磁直行星齿轮电机 (内齿圈材质: 金属)
PM DC Planetary Gear Motor (Ring Gear Material: Metal)

24JX10K/24ZY30 $\Phi 24$ 行星减速器, 允许转矩范围: 0.1N.m~1.0N.m
24mm OD Planetary Gearbox,
Permissible Load Range: 0.1N.m~1.0N.m

● 外形和安装尺寸 Dimensions



● 电动机主要技术参数 Motor Technical Data

电机型号 TYPE	额定电压 Rated voltage VDC	空载转速 No-load speed r/min	空载电流 No-load current mA	额定转速 Rated speed r/min	额定转矩 Rated torque mN.m	输出功率 Output power W	额定电流 Rated current mA	堵转转矩 Stall torque mN.m	堵转电流 Stall current A
24ZY30-1280	12	8000	80	6500	3	2.0	300	15	1.2
24ZY30-12100	12	10000	100	7700	4	3.1	420	18.5	1.6

● 齿轮减速电机主要技术参数 Gear Motor Technical Data

配置24ZY30-1280直流电机 (24ZY30-1280 DC Motor)

减速比 Reduction ratio	14	19	27	51	71	100	139	189	264	369	516
减速级数 Number of gear trains	2	2	2	3	3	3	3	4	4	4	4
减速器长度(L) Length(L) mm	34.0	34.0	34.0	42.5	42.5	42.5	42.5	50.8	50.8	50.8	50.8
空载转速 No-load speed r/min	571	421	296	157	113	80	58	42	30	22	16
额定转速 Rated speed r/min	464	342	241	127	92	65	47	34	25	18	13
额定转矩 Rated torque N.m	0.034	0.046	0.066	0.11	0.16	0.22	0.30	0.37	0.51	0.72	1
最大瞬间允许负载 Max. permissible load in a short time N.m	1.2	1.2	1.2	2.5	2.5	2.5	2.5	3	3	3	3

配置24ZY30-12100 直流电机 (24ZY30-12100 DC Motor)

减速比 Reduction ratio	14	19	27	51	71	100	139	189	264	369
减速级数 Number of gear trains	2	2	2	3	3	3	3	4	4	4
减速器长度(L) Length(L) mm	34.0	34.0	34.0	42.5	42.5	42.5	42.5	50.8	50.8	50.8
空载转速 No-load speed r/min	714	526	370	196	141	100	72	53	38	27
额定转速 Rated speed r/min	550	405	285	151	108	77	55	41	29	21
额定转矩 Rated torque N.m	0.045	0.062	0.087	0.15	0.21	0.29	0.41	0.49	0.69	0.96
最大瞬间允许负载 Max. permissible load in a short time N.m	1.2	1.2	1.2	2.5	2.5	2.5	2.5	3	3	3

● 电动机特性图 Motor Characteristic Figure

