

混合式步进行星齿轮减速电机 (内齿圈材质: 金属和粉末金属)

Planetary Gear Stepping Motor (Ring Gear Material: Metal and Powder Metal)

36JXES60K/42STH

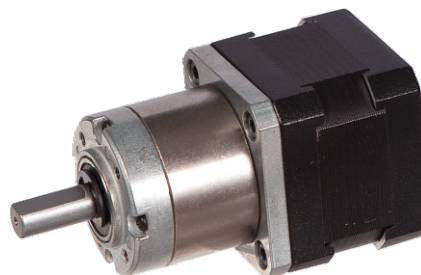
Φ36行星减速器, 允许转矩范围: 1.8N.m~6.0N.m
36mm Planetary Gearbox
Permissible Load Range: 1.8N.m~6.0N.m

可在两种材料的内齿圈中进行选择: 粉末金属 (型号36JXF60K), 金属 (型号36JXE60K)

Ring gear can be selected within the two materials: Powder metal (Type:36JXF60K), Metal (Type:36JXE60K)

行星齿轮减速器 Planetary Gearbox

内齿圈材料	Ring material	E型:金属 Metal F型:金属粉末 Powder metal
输出轴轴承形式	Bearing at output	滚动轴承 Ball bearings
最大允许径向负载 (离法兰10mm处) Max. Radial load(10mm from flange)		≤50N
最大允许轴向负载 Max. shaft axial load		≤30N
径向间隙 (测量点尽量接近法兰) Radial play of shaft (near to flange)		≤0.07 mm
轴向间隙 Axial play of shaft		≤0.3 mm
背隙 (无负载时) Backlash at no-load		≤1.5°



42STH 混合式步进电机性能 42STH Hybrid Stepping Motor Specifications

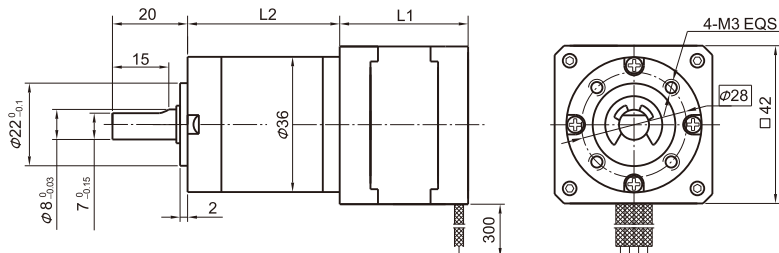
Model No.	额定电压 Rated Voltage	每相电流 Current /Phase	每相电阻 Resistance /Phase	每相电感 Inductance /Phase	保持转矩 Holding Torque	引出线数 # of Leads	转动惯量 Rotor Inertia	重量 Weight	长度 L1 Length L1	适配减速比 Max. Gear Ratio
单轴 Single Shaft	V	A	Ω	mH	kg.cm		g·m ²	kg	mm	
42STH33-0316A	12	0.31	38.5	21	1.6	6	35	0.22	34	≤1:100
42STH33-1334A	2.8	1.33	2.1	2.5	2.2	4	35	0.22	34	≤1:71

常规产品是单出轴, 可以订货双出轴, 型号的后缀号A改为B。 A Single Shaft, B Double shaft

36JXES60K行星减速器性能 36JXES60K Planetary Gearbox Specifications

减速比 Reduction ratio	3.71	5.18	14	19	27	51	71	100	139
减速级数 Number of gear trains	1			2			3		
减速器长度 (L2) Length(L2) mm	27.0			34.1			41.0		
最大额定转矩 Max. rated torque	kg.cm			24			50		
瞬间允许转矩 Short time permissible torque	kg.cm			70			150		
效率 Efficiency	%			81%			73%		
重量 Weight	g			210			290		

外形和安装尺寸 Dimensions



矩频曲线 Frequency-torque Characteristics

