

混合式步进行星齿轮减速电机 (内齿圈材质: 金属)

Planetary Gear Stepping Motor (Ring Gear Material: Metal)

**22JXS20K/20STH**

Φ22行星减速器, 允许转矩范围: 0.6N.m~2.0N.m  
22mm Planetary Gearbox  
Permissible Load Range: 0.6N.m~2.0N.m

● 行星齿轮减速器 Planetary Gearbox

|   |                   |                    |
|---|-------------------|--------------------|
| 内齿圈材料   | Ring material     | 金属 Metal           |
| 输出轴轴承形式   | Bearing at output | 滚动轴承 Ball bearings |
| 最大允许径向负载 (离法兰10mm处)<br>Max. Radial load(10mm from flange) |                   | ≤20N               |
| 最大允许轴向负载 Max. shaft axial load                            |                   | ≤10N               |
| 径向间隙 (测量点尽量接近法兰)<br>Radial play of shaft (near to flange) |                   | ≤0.08 mm           |
| 轴向间隙<br>Axial play of shaft                               |                   | ≤0.3 mm            |
| 背隙 (无负载时) Backlash at no-load                             |                   | ≤1.5°              |



● 20STH混合式步进电机性能 20STH Hybrid Stepping Motor Specifications

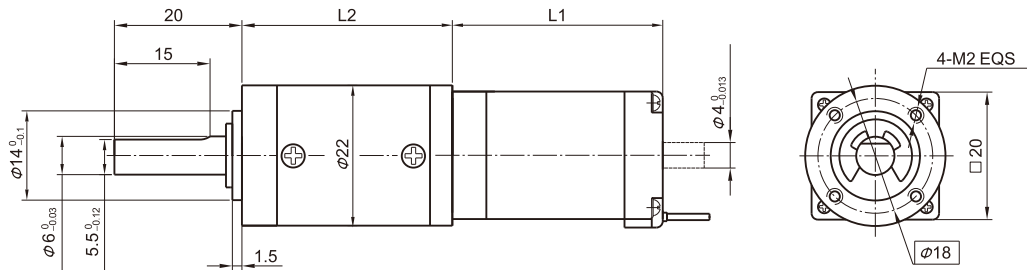
| Model No.       | 额定电压<br>Rated Voltage | 每相电流<br>Current /Phase | 每相电阻<br>Resistance /Phase | 每相电感<br>Inductance /Phase | 保持转矩<br>Holding Torque | 引出线数<br># of Leads | 转动惯量<br>Rotor Inertia | 重量<br>Weight | 长度 L1<br>Length L1 | 适配减速比<br>Max. Gear Ratio |
|-----------------|-----------------------|------------------------|---------------------------|---------------------------|------------------------|--------------------|-----------------------|--------------|--------------------|--------------------------|
| 单轴 Single Shaft | V                     | A                      | Ω                         | mH                        | g.cm                   |                    | g·m <sup>2</sup>      | g            | mm                 |                          |
| 20STH33-0604A   | 3.9                   | 0.6                    | 6.5                       | 1.7                       | 180                    | 4                  | 2.0                   | 60           | 33                 | ≤1:369                   |
| 20STH42-0804A   | 4.32                  | 0.8                    | 5.4                       | 1.5                       | 300                    | 4                  | 3.6                   | 80           | 42                 | ≤1:264                   |

常规产品是单出轴, 可以订货双出轴, 型号的后缀号A改为B。 A Single Shaft, B Double shaft

● 22JXS20K行星减速器性能 22JXS20K Planetary Gearbox Specifications

| 减 速 比 Reduction ratio                   | 3.71  | 5.18 | 14   | 19 | 27 | 51   | 71 | 100 | 139  | 189 | 264 | 369 |
|---|-------|------|------|----|----|------|----|-----|------|-----|-----|-----|
| 减速级数 Number of gear trains              | 1     |      | 2    |    |    | 3    |    |     | 4    |     |     |     |
| 减速器长度 (L2) Length(L2) mm                | 24.4  |      | 33.0 |    |    | 41.5 |    |     | 49.8 |     |     |     |
| 最大额定转矩<br>Max. rated torque             | kg.cm |      | 6    |    |    | 10   |    |     | 16   |     |     |     |
| 瞬间允许转矩<br>Short time permissible torque | kg.cm |      | 18   |    |    | 30   |    |     | 48   |     |     |     |
| 效率 Efficiency                           | %     |      | 90%  |    |    | 81%  |    |     | 73%  |     |     |     |
| 重量 Weight                               | g     |      | 35   |    |    | 45   |    |     | 55   |     |     |     |

● 外形和安装尺寸 Dimensions



● 矩频曲线 Frequency-torque Characteristics

