

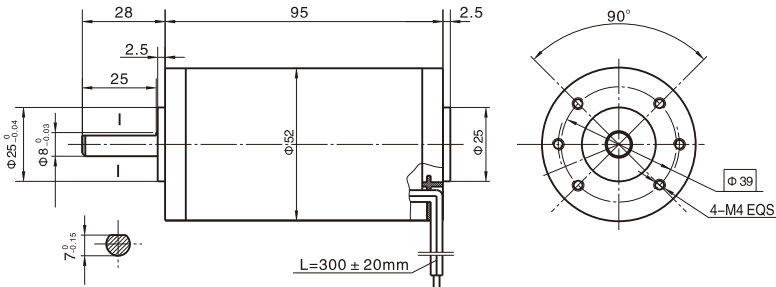
52ZY95永磁直流电动机 52ZY95 Brushed DC Motor

● 产品特点和用途 Description of The Product

直径52mm的永磁直流电动机，密封结构，适合于各种要求低噪音的使用场合。

52MM OD PMDC motor, totally enclosed, used in occasions which require motors with low noise.

● 外形尺寸 Dimensions



● 电动机主要技术参数 Motor Technical Data

电机型号 TYPE	额定电压 Rated voltage VDC	空载转速 No-load speed r/min	空载电流 No-load current A	额定转速 Rated speed r/min	额定转矩 Rated torque mN.m	输出功率 Output power W	额定电流 Rated current A	堵转转矩 Stall torque mN.m	堵转电流 Stall current A
52ZY95-2420	24	2000	0.2	1600	80	15	1.2	400	4.2
52ZY95-2430	24	3000	0.3	2400	100	25	1.8	410	6.0
52ZY95-2440	24	4000	0.4	3200	130	40	3.0	585	11

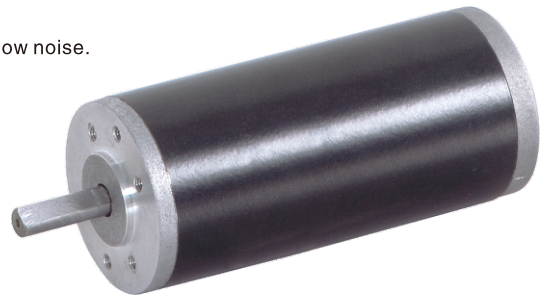
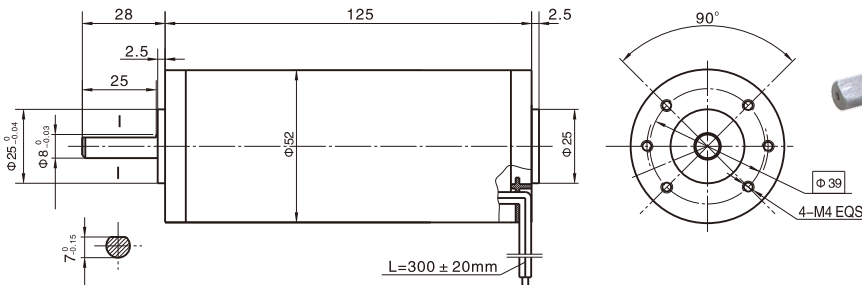
52ZY125永磁直流电动机 52ZY125 Brushed DC Motor

● 产品特点和用途 Description of The Product

直径52mm的永磁直流电动机，密封结构，适合于各种要求低噪音的使用场合。

52MM OD PMDC motor, totally enclosed, used in occasions which require motors with low noise.

● 外形尺寸 Dimensions



● 电动机主要技术参数 Motor Technical Data

电机型号 TYPE	额定电压 Rated voltage VDC	空载转速 No-load speed r/min	空载电流 No-load current A	额定转速 Rated speed r/min	额定转矩 Rated torque mN.m	输出功率 Output power W	额定电流 Rated current A	堵转转矩 Stall torque mN.m	堵转电流 Stall current A
52ZY125-2420	24	2000	0.40	1600	160	30	2.0	620	6.5
52ZY125-2430	24	3000	0.60	2400	190	50	3.5	700	11.5
52ZY125-2440	24	4000	0.80	3200	220	80	4.5	838	16.4