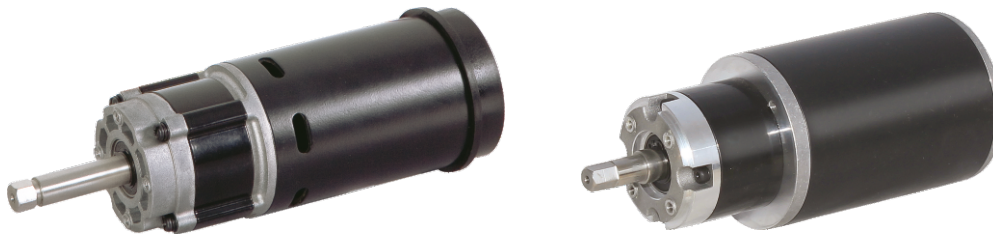


## 榨汁机用永磁直流行星齿轮电机 PMDC Gear Motor for Juicers

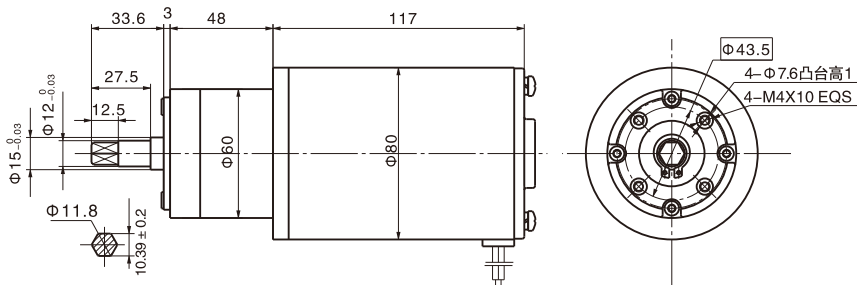
### ● 产品说明 Product Description

- 1、本产品用于家庭用果蔬榨汁机。
- 2、产品完整型号：60JX300K56/ 80ZY115，配置行星减速机减速比1:56，允许转矩范围：20N.m。
- 3、工作中需要外接桥式整流器，不带滤波电容工作，输入电压为220VAC或110VAC，频率为50 Hz或60Hz。
- 4、工作方式：S3运行20min / 停20min。

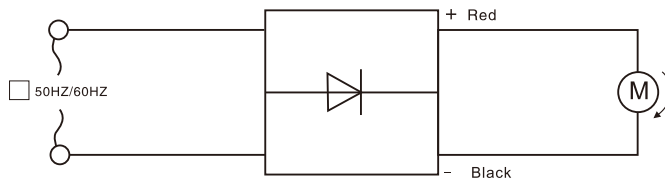
- 1、The Motor Is Made for Household Juice Extractors.
- 2、Model: 60JX300K56/ 80ZY115. Gearbox Ratio:1:56, Rated Torque Up to 20N.m.
- 3、Externally Connect Bridge Rectifier While Running; Without Filter Capacitor; Optional Voltage: 220VAC or 110VAC, Frequency 50HZ or 60HZ.
- 4、Duty Cycle: S3 (on 20 Min/Off 20 Min).



### ● 外形和安装尺寸 Dimensions



### ● 接线图 Wire Diagram



输入电压为220VAC或110VAC Input Voltage 220VAC or 110VAC



### ● 齿轮减速电机主要技术参数 Gearmotor Technical Data

电机型号 TYPE	额定电压 Rated voltage VDC	频率 Frequency Hz	空载转速 No-load speed r/min	空载电流 No-load current A	额定转速 Rated speed r/min	额定转矩 Rated torque N.m	输出功率 Output power W	额定电流 Rated current A	减速比 Reduction ratio
60JX56 / 80ZY115-11030	110	50/60	54	0.2	32	20	67	1.45	1:56
60JX56 / 80ZY115-22030	220	50/60	54	0.1	32	20	67	0.75	1:56